

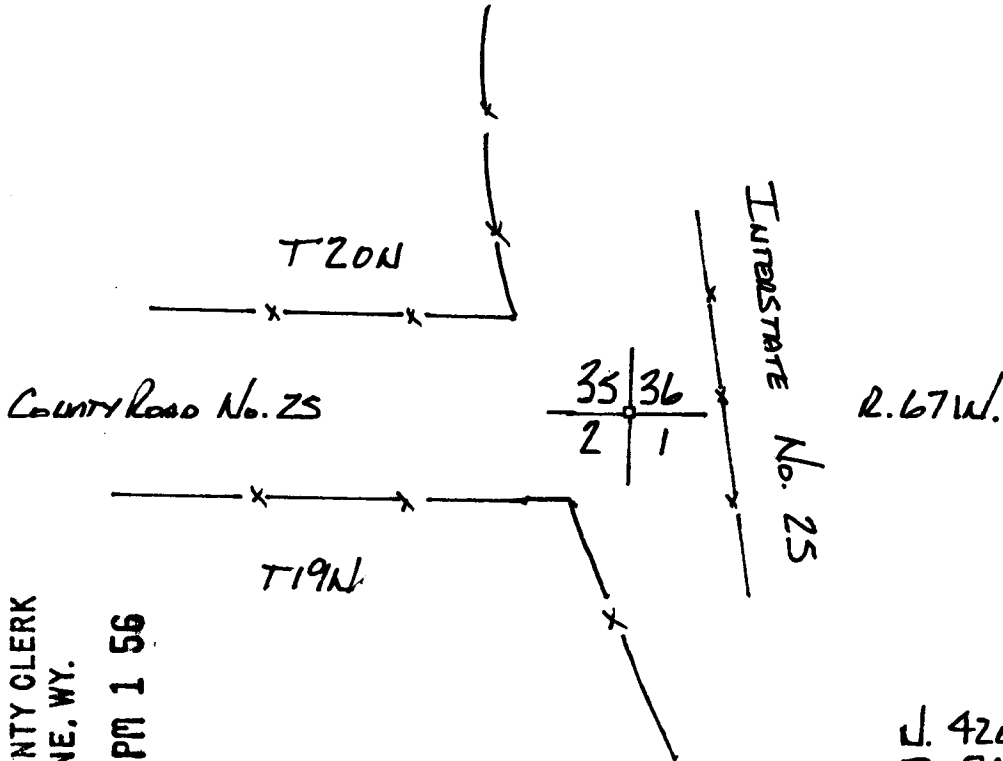
# State of Wyoming Corner Record

(In compliance with the *CORNER PERPETUATION AND FILING ACT*, Wyoming Statutes, 1977, Section 36-11-101, et. seq., and the Rules and Regulations of the Board of Registration for Professional Engineers and Professional Land Surveyors)

Reverse side of this form may be used if more space is needed.

Record of original survey and citation of source of historical information (if corner is lost or obliterated). Description of corner monumentation evidence found and/or monument and accessories established to perpetuate the location of this corner. Sketch of relative location of monument, accessories, and reference points with course and distance to adjacent corner(s) (if determined in this survey). Method and rationale for reestablishment of lost or obliterated corner.

*Recovered corner in centerline  
of old Hwy 87 (Service Road)  
on E of T19N. No. 25 to West*



LARAMIE COUNTY CLERK  
CHEYENNE, WY.

'97 SEP 24 PM 1 56

210712

N. 426423.3'  
E. 743772.9'

BASED ON NAD 83 ADJ 93  
WYOMING EAST ZONE  
STATE PLANE COORDINATES  
LARAMIE COUNTY WYOMING

Date of Field Work: 4 Dec 96 Office Reference: W/O 9423 BL 994

**CROSS INDEX DIAGRAM**

Firm/Agency, Address

This corner record was prepared by me or under my direction and supervision.  
**SEAL & SIGNATURE**

1	2	3	4	5	6	7	8	9	10	11	12	13	14	15	16	17	18	19	20	21	22	23	24	25		
A																										
B																										
C	6	6	7	8	9	10	11	12	13	14	15	16	17	18	19	20	21	22	23	24	25	26	27	28		
D																										
E																										
F	7	8	9	10	11	12	13	14	15	16	17	18	19	20	21	22	23	24	25	26	27	28	29	30		
G																										
H																										
I																										
J																										
K																										
L	13	14	15	16	17	18	19	20	21	22	23	24	25	26	27	28	29	30	31	32	33	34	35	36		
M																										
N																										
O																										
P	19	20	21	22	23	24	25	26	27	28	29	30	31	32	33	34	35	36	37	38	39	40	41	42		
Q																										
R																										
S																										
T																										
U																										
V																										
W																										
X	31	32	33	34	35	36	37	38	39	40	41	42	43	44	45	46	47	48	49	50	51	52	53	54		
Y																										
Z																										

Worthington, Lenhart & Carpenter, Inc.  
200 Pronghorn Street  
Casper, Wyoming 82601  
Telephone Number: 307-266-2524



Corner Name: NW Section: 1 T 19N R 67W; 6th P.M. Cross-Index No.: A-21

SBRPEPLS/PLSW: March 1994

BOOK 1461

0667